

TAILORED
(for her)

9025 - (RE)SOLVE LADIES TAILORED 1-BUTTON BLAZER

\$150.00

Details: Notch lapel | 1-button single breasted | Single vent | Stretch armhole | Non functional buttons at cuff | Flap pockets | Stretch fabric and lining.



COLORS

Grey Melange, Bright
Navy, Black



Fabric + Care: 62% Recycled
Poly | 33% Viscose | 5%
Spandex | Year-round weight
| Antibacterial | Machine
Washable

9027 - (RE)SOLVE LADIES' TAILORED MID-RISE DRESS PANTS

\$80.00

Details: athleisure inspired performance + stretch. Mid-rise | Slim leg with tapered leg opening | Wide, yoga-inspired stretch waistband | Beltloops | Double hook & zip closure | Side slip pockets | Back welt pocket.



COLORS

Grey Melange, Black,
Bright Navy



Fabric + Care: 62% Recycled
Poly | 33% Viscose | 5%
Spandex | Year-round weight |
Antibacterial | Machine
Washable

9029 - (RE)SOLVE LADIES' TAILORED CURVY DRESS PANTS

\$80.00

Details: athleisure inspired performance + stretch

Mid-rise | Slim leg with tapered leg opening | Wide, yoga-inspired stretch waistband | Double hook & zip closure | Side slip pockets | Back welt pocket.



COLORS

Bright Navy, Black,
Grey Melange



Fabric + Care: 62% Recycled
Poly | 33% Viscose | 5%
Spandex | Year-round weight |
Antibacterial | Machine
Washable

9031 - (RE)SOLVE LADIES' TAILORED PENCIL SKIRT

\$80.00

Details: High-rise, pencil silhouette | Knee length | Stretch waistband | Discrete cellphone pocket at back hip | Back zipper | Double back slits (for coverage and ease of movement).



COLORS

Bright Navy, Grey
Melange, Black



Fabric + Care: 62% Recycled
Poly | 33% Viscose | 5%
Spandex | Year-round weight
| Antibacterial | Machine
Washable

9033 - (RE)SOLVE LADIES' TAILORED COMMUTER DRESS

\$150.00

Details: Tailored fit | Cap sleeves | Boat neckline | Pencil bottom shape | Knee length | Center vent.



COLORS

Black, Bright Navy,
Grey Melange



Fabric + Care: 62% Recycled
Poly | 33% Viscose | 5%
Spandex | Year-round weight
| Antibacterial | Machine
Washable

9011 - (RE)SOLVE LADIES' KNIT PONTE OPEN BLAZER

\$150.00

Details: Slim-fitting | Open-front silhouette | Darted front | Full-length sleeves | Hip length.



COLOR Black

Fabric + Care: 30% Recycled Poly | 42% Poly | 35% Viscose | 5% Elastane |
Antibacterial | Machine Washable

9009 - (RE)SOLVE LADIES' KNIT PONTE HYBRID PANTS

\$80.00

Details: Slim fit | Side zip | Stretch waistband | Adjustable hem (can be work cropped or full length).



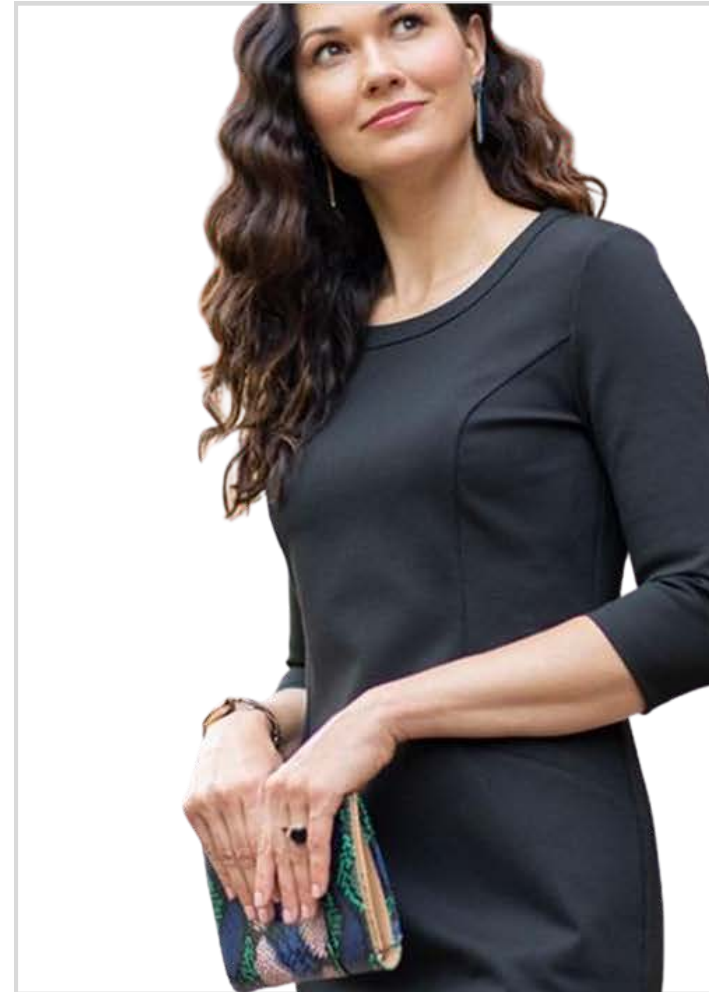
COLOR Black

Fabric + Care: 30% Recycled Poly | 42% Poly | 35% Viscose | 5% Elastane | Antibacterial
| Machine Washable

1025 - LADIES' KNIT PONTE SHEATH DRESS

\$80.00

Details: Versatility meet comfort. This dress features comfort stretch spandex to keep you comfortable all day no matter the use.



COLOR Black

72% Polyester/24% Rayon/4% Spandex, 9.8 oz. | Tailored fit | Spandex adds comfort and easy movement | Two angled welt pockets | $\frac{3}{4}$ -sleeves | Front princess seams and back darts | Home launder

WOVENS
(for her)

2047 - STRETCH CREPE LONG SLEEVE CAMP BLOUSE

\$45.00

Taking a more refined approach to tailoring, this chic blouse offers movement and ease in a fine crepe fabric and soft fit.



COLORS

Ivory Chiffon, Townsend Green,
Anchor Grey, Deep Black



4.3-ounce, 95/5 poly/spandex

2075 - WOMEN'S LONG SLEEVE STRETCH WOVEN SHIRT

\$50.00

Details: Smart tailoring and a modern fit, this shirt will follow your every move, day or night.



COLORS

Deep Black, White, Air
Blue, Gusty Grey



3.7-ounce, 56/36/8
cotton/poly/spandex

2085 - WOMEN'S STRETCH PIQUE FULL-BUTTON POLO

\$40.00

Details: Be ready to perform your very best with these shirts designed with stain release, odor-fighting and moisture-wicking technologies. Order-fighting, stain release, moisture-wicking, wrinkle-resistant.



COLORS

True Navy, Black, Silver,
White, Cloud Blue



3.3-ounce, 100% polyester

2087 - LADIES GINGHAM EASY CARE BLOUSE

\$26.00

Banish boring office attire! Created with traditional gingham colors and scale, our wrinkle-resistant shirts offer Easy Care convenience and everyday wearability.



COLORS

Black/White, Gusty Grey/White,
Rich Red/White, True Navy/White,
True Royal/White



- 3.1-ounce, 60/40 cotton/poly
- Bias-cut details
- Open collar and neckline
- Pearlized buttons
- Bust darts
- Inverted back pleat
- Rounded adjustable cuffs
- Colors: Grey, Red, Black

2051 - STRETCH CREPE 3/4 CAMP BLOUSE

\$40.00

Taking a more refined approach to tailoring, this chic blouse offers movement and ease in a fine crepe fabric and soft fit.



COLORS

Deep Black, Anchor Grey,
Ivory Chiffon, Night Navy,
Insignia Blue



4.3-ounce, 95/5 poly/spandex

2089 - WOMEN'S 3/4 SLEEVE TUNIC BLOUSE

\$38.00

Details: Transition seamlessly from professional life to play in this comfortable and flattering tunic blouse.



COLORS

Deep Olive, Black, True Navy, Sterling Grey, Rose Quartz, Ivory Chiffon



4.1-ounce, 100% polyester crepe

2091 - WOMEN'S SLEEVELESS BLOUSE

\$38.00

Details: A longer length and delicate details make this sleeveless blouse a must-have addition to any modern day professional wardrobe.



COLORS

True Navy, Black,
Sterling Grey



4.1-ounce, 100% polyester
crepe | Back yoke with
pleats | Sleeveless V-neck
styling | Longer length |
Curved drop tail hem

2093 - WOMEN'S WRAP BLOUSE

\$38.00

Details: With a trendy silhouette, this blouse has a soft drape that creates a polished and beautiful look for today's professional woman.



COLORS

Black, Ivory Chiffon, Rose Quartz, Sterling Grey



Fabric: 4.1-ounce,
100% polyester crepe

2095 - WOMEN'S CITY STRETCH TUNIC

\$38.00

Details: Comfort and performance meet classic corporate style. Odor-fighting, wrinkle-resistant and moisture-wicking, these looks have just the right amount of stretch to keep up with a busy day.



COLORS

Black, River Blue Navy, White,
True Blue/White, Graphite/White



3.7-ounce | 93/7 poly/spandex |
Odor-fighting | Wrinkle-resistant
| Moisture-wicking | Open collar
and neckline | Longer tunic length
| Pearlized buttons | Rounded
adjustable cuffs | Curved hem

KNITS
(for her)

2097 - LADIES' PERFORMANCE KNIT DRESS SHIRT

\$43.00

Details: Our sleek dress shirt fuses the comfort of a knit with the structure of a woven shirt. It wicks moisture, has ease of movement and an unencumbered fit.



COLORS

White, Black, Dress Shirt
Blue, Dark Navy



3.8-ounce, 100% micropique
polyester tricot | Open collar |
Dyed-to-match buttons | Rounded
adjustable cuffs

2065 - LADIES' STRETCH PIQUE POLO

\$25.00

Crafted in a heavier knit, this refined polo is just as comfortable as the classics from which it was inspired. The easy-moving fabric offers moisture wicking when the heat is on. The matching satin-finished rimmed button on the back collar extend a style-forward feel on the outside, while a dyed-to-match satin-twill neck tape lines the inside.



COLORS

White, Insignia Blue, Townsend Green, Blue Note, Anchor Grey, Night Navy, Deep Black, Apple Red



- 8.1-ounce, 58/39/3 cotton/poly/spandex diamond pique
- Moisture-wicking
- Button-backed, ribbed collar
- Dyed-to-match satin twill neck tape
- 5-button placket
- Rimmed, black satin-finished buttons
- Ribbed cuffs
- Straight hem
- Available Sizes: XS-4XL
- Sourced from a member of the Sustainable Apparel Coalition.

2067 - WOMEN'S STRETCH JERSEY POLO

\$23.00

For a more style-forward polo, everyday pique knit is replaced with a soft jersey blend for a subtle drape and a smooth hand. Moisture-wicking and self-turned cuffs and hems lend cool vibes, all around.



COLORS

Anchor Grey, Deep Black,
Insignia Blue



92/8 poly/spandex jersey. | Moisture-wicking | Self-collared V-neck | Drop shoulders | Straight body | Self-turned cuffs and hem | Side vents |

Ladies C-FREE™ Cotton Blend Pique Polo

\$25.00

We start by reducing the product's impact by switching to at least 50% preferred materials. We then neutralize the total carbon footprint of each product in the C-FREE program—from the product's initial raw materials to its end-of-life—through Carbonfree® certification. This certification purchases third-party, verified carbon offsets.



COLORS

Black, Charcoal Heather, Dark Green Heather, Deep Smoke Heather, Garnet, Navy Heather, True Blue



- 5.3-ounce, 60% recycled cotton/40% post-consumer recycled polyester honeycomb pique
- Tag-free label
- Self-fabric collar
- Open V-neck placket
- Curved drop tail hem

2045 - STRETCH OPEN FRONT CARDIGAN

\$47.00

Made for moving on and off the clock, this comfy cocoon cardi offers a relaxed fit and fine fleece fabric. Clean design lines, like a back yoke and integrated pockets distinguish its forward-thinking silhouette.



COLORS

Deep Black, Anchor Grey, Night Navy, Gusty Grey



- 7.4-ounce, 53/41/6 rayon/poly/spandex French terry
- Softly dropped shoulders
- Back yoke and seaming detail
- Integrated front pockets
- Relaxed fit
- Available Sizes: XS-4XL
- Sourced from a member of the Sustainable Apparel Coalition.

WOMEN'S OPEN FRONT CARDIGAN SWEATER

\$47.00

Soft, comfortable, and as a transitional layer for day or night, this easy care sweater is a refined knit that won't bag out with wear. Sophisticated details like square patch pockets and a wide, rib bottom hem lend a modern sensibility to accent your unique sense of style.



COLORS

Gusty Grey Heather, Deep Black, Birch



- 90/9/1 cotton/nylon/spandex
- Fully-fashioned armholes
- Square patch pockets
- Wide, rib bottom hem

WOMEN'S INTERLOCK CARDIGAN SWEATER

\$55.00

Smart, stylish and made for layering night or day, this double-knit jacket blends a sport-inspired shape with a casual-cool attitude. It offers all the traditional bomber design cues, like rib knit collar and cuffs, with a more style-forward, streamlined fit.



COLORS

Anchor Grey, Deep Black, Night Navy, Townsend Green



- 8.3-ounce, 100% double-knit polyester
- Easy care
- Rib knit collar and cuffs
- Exposed zipper with matte black pull
- Front pockets

\$47.00

WOMEN'S INTERLOCK CARDIGAN SWEATER

This lightweight, dual-color cardigan layers beautifully and has a timeless appeal. An open front and front and back seaming details at the waist give it sophistication.



COLORS

Charcoal Heather/Medium Heather Grey,
Deep Black/Charcoal Heather,
Estate Blue Heather/Charcoal Heather,
Medium Heather Grey/Charcoal Heather



- 7.5-ounce, 60/40 cotton/poly
- Shawl collar
- Raglan sleeves
- Side seam pockets

Mix it up at the office or after work with this versatile, modern blazer. Designed for layering comfort, this easy-to-wear, deconstructed style can go from refined to casual and resist wrinkles all day long.

**COLORS**

Battleship Grey, Deep Navy,
Rich Red, Black



- 8.5-ounce, 52/48 cotton/poly ponte knit
- Peak lapel
- Front and back darts
- Welt pockets
- 2-button front closure
- Back vent

2079 - LADIES OPEN FRONT CARDIGAN SWEATER

\$47.00

This soft, cozy cardigan sweater has a flattering drape and features fully-fashioned sleeves for strength and enduring wear. Stylish longer rib knit height details at cuffs and hem.



COLORS

Biscuit, Black, Medium
Heather Grey, Navy



- 60/40 cotton/nylon
- Rib knit collar, cuffs and hem
- Longer length

2081 - LADIES MARLED CARDIGAN SWEATER

\$47.00

Made for layering, this two-toned marled cardigan livens up any office or casual look.



COLORS

Navy Marl, Warm Grey Marl,
Black Marl



- 60/40 cotton/acrylic
- Fully fashioned seams
- Dyed-to-match buttons
- Welt pockets with rib knit trim
- 2x2 rib knit cuffs and hem

2083 - LADIES MARLED COCOON SWEATER

\$47.00

Wrap yourself in a cozy cocoon designed with exceptional drape and unrestricted movement.



COLORS

Warm Grey Marl, Black Marl



- 60/40 cotton/acrylic
- Fully fashioned seams
- 3/4-length dolman sleeves
- Gently curved opening
- Center back seam
- 1x1 rib knit cuffs and hem

OUTERWEAR
(for her)

2073 - WOMEN'S BOXY QUILTED JACKET

\$60.00

With reliable warmth and durable water-repellency in a lightweight package, this trend-forward jacket is made for night-to-day wear. The subtle sheen finish, diamond quilt and oxidized molded zipper make it a beyond-basic essential.



COLOR Deep Black



- 100% nylon shell
- 100% polyester lining
- 3-ounce, 100% polyester insulation
- Durable water-repellent (DWR) finish
- Diamond quilting
- Black oxidized molded zipper
- Open, welted hand pockets
- Rib knit cuffs, shoulder detail and baseball-style collar
- Drop shoulder
- Slightly shorter length
- Open hem with adjustable locking drawcord front and elastic back
- Embroidery access pocket

\$94.00

High style and high performance unite in our fully seam-sealed jacket. Functional design details like a three-panel locking drawstring hood, an interior storm flap and reinforced waterproof zipper help keep rain at bay. Store essentials in the reverse-coil zip pockets. Interior locker loop for drip-dry hanging.



COLORS Deep Black, Anchor Grey



- 100% poly twill face fabric bonded to a waterproof laminate-protecting grid print
- 10k/10k waterproof breathable fabric
- Fully seam-sealed
- Durable water-repellent (DWR) finish
- Adjustable brimmed hood with locking drawcord
- Interior locker loop
- 2-way waterproof center front zipper
- Full-length interior storm flap with chin guard
- Hidden reverse-coil zip pockets
- Vents at rear hem
- Sizes: XS-4XL
- Sourced from a member of the Sustainable Apparel Coalition.

WOMEN'S PUFFY PARKA

\$94.00

Professional and polished while protecting from the elements, this lofty, high-performing puffy is intentionally designed to lend dependable warmth and transitional style for downtown or out-of-town. The DWR finish sheds moisture while the blown-in synthetic insulation gives the soft, lightweight and pliable effect of down with easy washability.



COLORS

Anchor Grey, Deep Black,
Townsend Green



- Quilted 3-piece hood
- Reverse coil, 2-way front zipper
- Interior storm flap
- Exterior storm flap with hidden snap closure
- Interior right-side pocket
- Hidden, zippered hand pockets

2107 - WOMEN'S PUFFY VEST

\$73.00

With a design that easily transitions from office to street to home, and a soft, supple hand, this cold-weather layer is luxurious and high-performing. With a moisture-shedding DWR exterior, the interior features lofty, lightweight insulation for down-like warmth and the easy care of a synthetic.



COLORS

Anchor Grey, Birch, Deep Black, Night Navy



- 100% polyester
- 5K/3K waterproof breathable fabric
- 7-ounce, 100% polyester blown insulation

TAILORED
(for him)

9026 - (RE)SOLVE 2-BUTTON BLAZER

\$150.00

Details: Notch lapel | 2-button single breasted | Double vents | Stretch armhole | Non functional "kissing" buttons at cuff | Flap pockets | Stretch fabric and lining.



COLORS

Bright Navy, Grey
Melange, Black



Fabric + Care: 62% Recycled
Poly | 33% Viscose | 5%
Spandex | Year-round weight
| Antibacterial | Machine
Washable

9028 - (RE)SOLVE TAILORED SLIM DRESS PANT

\$80.00

Details: Stretch waistband | Front closure has extend tab with button | Slash front pockets | Welt back pockets with buttons | Half lined | Tapered leg opening.



COLORS

Bright Navy, Black, Grey
Melange



Fabric + Care: 62% Recycled
Poly | 33% Viscose | 5%
Spandex | Year-round weight |
Antibacterial | Machine
Washable

9036 - (RE)SOLVE 5-POCKET TECH CHINO

\$80.00

Details: Slim fit | 5-pocket, jean styling.



COLORS

Khaki, Bright Navy, Black,
Grey Melange



Fabric + Care: 89% Recycled Poly
| 11% Elastane | Antibacterial |
Machine Washable

WOVENS
(for him)

2076 - LONG SLEEVE STRETCH WOVEN SHIRT

\$50.00

Details: Smart tailoring and a modern fit, this shirt will follow your every move, day or night.



COLORS

Townsend Green, Night Navy,
Anchor Grey, Gusty Grey,
Night Navy, Air Blue



- 3.7-ounce, 56/36/8
- cotton/poly/spandex

2160 - LONG SLEEVE PERFORMANCE DRESS SHIRT

\$40.00

Details: Be ready to perform your very best with these shirts designed with stain release, odor-fighting and moisture-wicking technologies. Order-fighting, stain release, moisture-wicking, wrinkle-resistant.



COLORS

True Navy, Cloud Blue,
White, Silver, Black



- Fabric: 3.3-ounce
- 100% polyester

2162 - CITY STRETCH DRESS SHIRT

\$43.00

Details: Comfort and performance meet classic corporate style. Odor-fighting, wrinkle-resistant and moisture-wicking, these looks have just the right amount of stretch to keep up with a busy day.



COLORS

River Blue Navy, Black,
Graphite/White, True
Blue/White, White



3.7-ounce, 93/7 poly/spandex |
Odor-fighting | Wrinkle-resistant |
Moisture-wicking | Open collar
French placket | Pearlized buttons
| Rounded adjustable cuffs

2164 - GINGHAM EASY CARE SHIRT

\$26.00

Banish boring office attire! Created with traditional gingham colors and scale, our wrinkle-resistant shirts offer Easy Care convenience and everyday wearability.



COLORS

Black/White, Rich Red/White,
True Royal/White, Gusty
Grey/White, True Navy/White



- 3.1-ounce, 60/40 cotton/poly
- Bias-cut details
- Button-down collar
- Pearlized buttons
- Back box pleat
- Left chest pocket
- Mitered adjustable cuffs

KNITS
(for him)

2166 - PERFORMANCE KNIT DRESS SHIRT

\$43.00

Details: Our sleek dress shirt fuses the comfort of a knit with the structure of a woven shirt. It wicks moisture, has ease of movement and an unencumbered fit.



COLORS

Dark Navy, Battleship Grey,
Black, White



3.8-ounce, 100% micropique
polyester tricot | Versatile
collar that can be worn open or
buttoned down | Dyed-to-match
buttons | Left chest pocket |
Rounded adjustable cuffs

STRETCH PIQUE FULL-BUTTON POLO

\$23.00

Combining the smart tailoring of a woven shirt with the movement and comfort of a soft knit, this shirt eases between night and day. The polished silhouette complements office wear, while the moisture-wicking fabric make it perfect for post-work play. A back yoke seam notched vent hem, and satin-finished buttons extend the contemporary profile.



COLORS

Townsend Green, Deep Black, Anchor Grey/Heather, Anchor Grey, White



- Moisture-wicking
- Self-fabric, button-down collar
- Rimmed, black satin-finished buttons (White buttons on white)
- Back yoke
- Self-turned cuffs and hem
- Notched vents
- Available Sizes: XS-4XL
- Sourced from a member of the Sustainable Apparel Coalition.

2024 - STRETCH PIQUE POLO

\$25.00

Crafted in a heavier knit, this refined polo is just as comfortable as the classics from which it was inspired. The easy-moving fabric offers moisture wicking when the heat is on. The matching satin-finished rimmed button on the back collar extend a style-forward feel on the outside, while a dyed-to-match satin-twill neck tape lines the inside.

COLORS

Anchor Grey, Deep Black, White, Townsend Green, Night Navy, Insignia Blue, Blue Note, Apple Red



- 8.1-ounce, 58/39/3 cotton/poly/spandex diamond pique
- Moisture-wicking
- Button-backed, ribbed collar
- Dyed-to-match satin twill neck tape
- 2-button placket
- Rimmed, black satin-finished buttons
- Ribbed cuffs
- Notched vents
- Available Sizes: XS-4XL
- Sourced from a member of the Sustainable Apparel Coalition.



2028 - STRETCH JERSEY POLO

\$23.00

For a more style-forward polo, everyday pique knit is replaced with a soft jersey blend for a subtle drape and a smooth hand. Moisture-wicking and self-turned cuffs and hems lend cool vibes, all around.



COLORS

Anchor Grey, Deep Black, Insignia Blue, Night Navy, Townsend Green, White



- 5-ounce, 92/8 poly/spandex jersey
- 6.2-ounce, 94/6 poly/spandex jersey
- Features+Benefits
- Moisture-wicking
- Self-collar with collar band
- 3-button placket
- Smoke satin-finished, rimmed buttons
- Black satin-finished, rimmed buttons (Deep Black)
- Self-turned cuffs and hem
- Notched vents at hem

2028 - C-FREE Cotton Blend Pique Polo

\$23.00

We start by reducing the product's impact by switching to at least 50% preferred materials. We then neutralize the total carbon footprint of each product in the C-FREE program—from the product's initial raw materials to its end-of-life—through Carbonfree® certification. This certification purchases third-party, verified carbon offsets.



COLORS

Black, Charcoal Heather, Dark Green Heather, Deep Smoke Heather, Garnet, Navy Heather, True Blue



- 5.3-ounce, 60% recycled cotton/40% post-consumer recycled polyester honeycomb pique
- Tag-free label
- Flat knit collar
- 3-button placket
- Buttons include 26% recycled content
- Drop tail hem
- Side vents

2132 - DOUBLE-KNIT SNAP FRONT JACKET

\$48.00

Made to be dressed up or down, this modern layer blends the laidback comfort of a sweatshirt and the sophistication of a tailored jacket. Matte-finished snaps on self-fabric cuffs allow for easy on and off wear. The open collar allows tees and shirts to stylishly peek through.



COLORS

Deep Black, Night Navy,
Townsend Green



- 8.3-ounce, 100% double-knit polyester
- Open collar
- Matte-finished snaps
- Double-patch, flap front pockets
- Self-fabric cuffs
- Available Sizes: XS-4XL
- Sourced from a member of the Sustainable Apparel Coalition.

2170 - DOUBLE KNIT BOMBER

\$48.00

Smart, stylish and made for layering night or day, fleece jackets blend a sport-inspired shape with a casual-cool attitude. They offer all the traditional bomber design cues, like rib knit collar and cuffs, with a more style-forward, streamlined fit.



COLORS

Anchor Grey, Deep Black, Night Navy, Townsend Green



- 8.3-ounce, 100% double-knit polyester
- Easy care
- Rib knit collar and cuffs
- Exposed zipper with matte black pull
- Front pockets
- Available Sizes: XS-4XL
- Sourced from a member of the Sustainable Apparel Coalition.

2168 - 1/4-ZIP SWEATER

\$40.00

Smart, stylish and made for layering night or day, fleece jackets blend a sport-inspired shape with a casual-cool attitude. They offer all the traditional bomber design cues, like rib knit collar and cuffs, with a more style-forward, streamlined fit.



COLORS

Deep Black, Gusty Grey Heather, Insignia Blue



- 8.3-ounce, 100% double-knit polyester
- Easy care
- Rib knit collar and cuffs
- Exposed zipper with matte black pull
- Front pockets
- Available Sizes: XS-4XL
- Sourced from a member of the Sustainable Apparel Coalition.

2144 - INTERLOCK FULL-ZIP

\$47.00

Designed for the modern professional, this double-knit style has a striking dual-color look. Easy to dress up or down, it's exceptionally soft and versatile enough to wear year-round.



COLORS

Charcoal Heather/Medium
Heather Grey, Deep
Black/Charcoal Heather, Estate
Blue Heather/Charcoal Heather



- 7.5-ounce, 60/40 cotton/poly
- Back yoke
- Cadet collar with contrast interior
- Reverse coil zipper
- Welt pockets
- Rib knit cuffs and hem

\$47.00

With rib knit details, this fine-gauge layerable sweater is just right for a day in the office or night out. Fully-fashioned sleeves add durability and ease of motion.



COLORS

Black, Navy, Charcoal Heather



- 60/40 cotton/nylon
- Rib knit collar, shoulders, cuffs and hem

2148 - INTERLOCK 1/4-ZIP

\$47.00

Designed for the modern professional, this double-knit style has a striking dual-color look thanks to two fabrics being bonded together. Easy to dress up or down, it's exceptionally soft and versatile enough to wear year-round.



COLORS

Charcoal Heather/Medium
Heather Grey, Deep
Black/Charcoal Heather, Estate
Blue Heather/Charcoal Heather,
Medium Heather Grey/Charcoal
Heather



- 7.5-ounce, 60/40 cotton/poly
- Coverstitched seams
- Cadet collar
- Covered reverse coil zipper
- Self-fabric cuffs and hem

2150 - SWEATER VEST

\$40.00

Span the divide between dressy and casual with this versatile v-neck sweater vest that pairs easily with slacks or jeans.



COLORS

Navy, Charcoal Heather, Black



- 60/40 cotton/nylon
- Rib knit V-neck, armholes and hem

2152 - MARLED CREW SWEATER

\$40.00

Two-toned marled yarns give this warm sweater a handsome look.



COLORS

Warm Grey Marl, Black Marl



- 60/40 cotton/acrylic
- Fully fashioned seams
- Saddle shoulders with back-to-front rib detail
- 1x1 rib knit neck, cuffs and hem

OUTERWEAR

(for him)

4026 - DOUBLE BOMBER JACKET

\$55.00

Classic Bomber: 5.5 oz. | Shell: 100% Recycled Polyester with PVC coating | Lining: 100% Recycled Polyester satin with 70 gsm insulation in body | Polyester fiber in this blend is made from recycled content including plastic bottles. | Recycled poly helps reduce water usage, energy consumption and CO2 emissions when producing this garment. | Medium fill for year-round wear | Rib-knit banding at collar, cuffs and hem | Utility pocket on sleeve | Premium YKK zipper | Retail fit, unisex sizing



COLORS

Army, Black, Brown Vegan
Leather, Black Vegan Leather



2140 - QUILTED FULL-ZIP JACKET

\$60.00

With reliable warmth and durable water-repellency in a lightweight package, this trend-forward jacket is made for night-to-day wear. The subtle sheen finish, diamond quilt and oxidized molded zipper make it a beyond-basic essential.



COLORS

Townsend Green, Deep Black



- Durable water-repellent (DWR) finish
- Diamond quilting
- Black oxidized molded zipper
- Cropped collar
- Open, welted hand pockets
- Vent with hidden snap at side seams
- Available Sizes: XS-4XL
- Sourced from a member of the Sustainable Apparel Coalition.

2146 - WATERPROOF RAIN SHELL

\$94.00

High style and high performance unite in our fully seam-sealed jacket. Functional design details like a three-panel locking drawstring hood, an interior storm flap and reinforced waterproof zipper help keep rain at bay. Store essentials in the reverse-coil zip pockets. Interior locker loop for drip-dry hanging.



COLORS

Anchor Grey, Deep Black



- 100% poly twill face fabric bonded to a waterproof laminate-protecting grid print
- 10k/10k waterproof breathable fabric
- Fully seam-sealed
- Durable water-repellent (DWR) finish
- Adjustable brimmed hood with locking drawcord
- Interior locker loop
- Waterproof zipper
- Full-length interior storm flap with chin guard
- Hidden reverse-coil zip pockets
- Adjustable, locking drawcord hem
- Sourced from a member of the Sustainable Apparel Coalition.

PUFFY JACKET

\$94.00

Professional and polished while protecting from the elements, this lofty, high-performing puffy is intentionally designed to lend dependable warmth and transitional style for downtown or out-of-town. The DWR finish sheds moisture while the blown-in synthetic insulation gives the soft, lightweight and pliable effect of down with easy washability.



COLORS

Anchor Grey, Deep Black,
Night Navy, Townsend Green

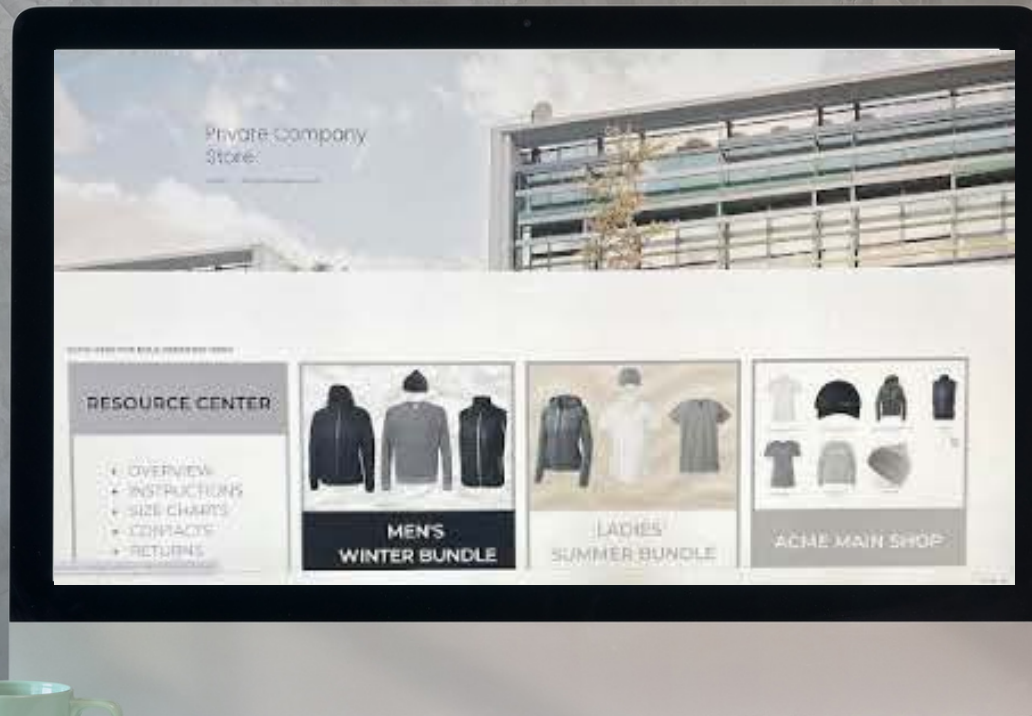


- 100% polyester
- 5K/3K waterproof breathable fabric
- 12-ounce, 100% polyester blown insulation

Features:

- Zip-through collar
- Molded front zipper
- Hidden, zippered hand pockets

CORPORATE PROGRAMS



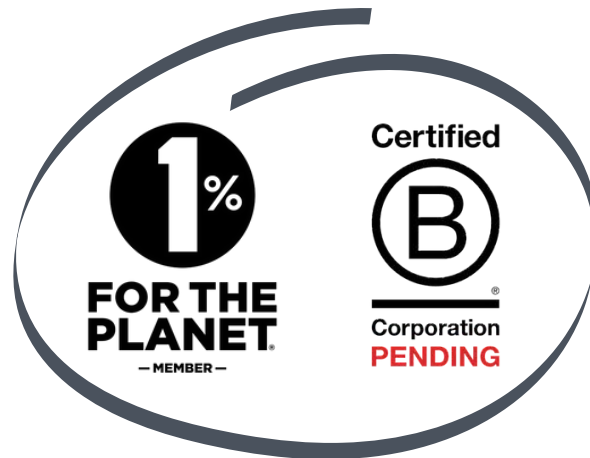
- Design Consultation
- Private Company Stores
- Discounted Pricing
- Program Management
- Logo Applications
- Take Back Program

LEARN MORE AT [RSLVE.COM/CORPORATE-PROGRAMS/](https://www.rslve.com/corporate-programs/)

RSLVE

BUSINESS OUTFITTERS

RSLVE (*re·solve*) designs and executes inspiring apparel programs for groups and organizations of all sizes. From t-shirts that promote your brand to complex uniform programs, we collaborate with you to design stylish impressions that embody the spirit of your brand. And we do it all with an authentic commitment to *STYLE, PEOPLE, PLANET*.



rslve.com | info@rslve.com | @rslve | 888.55.rslve