



RSLVE



CAREER APPAREL
[spring 24]



rslve.com | info@rslve.com | 888.55.rslve



TABLE OF CONTENTS

APPAREL

| | |
|--------------------------|----|
| TAILORED APPAREL..... | 3 |
| PERFORMANCE CASUALS..... | 7 |
| WOVENS..... | 9 |
| KNITS..... | 12 |

| | |
|-------------------------|----|
| CORPORATE PROGRAMS..... | 16 |
|-------------------------|----|

| | |
|---------------|----|
| ABOUT US..... | 17 |
|---------------|----|



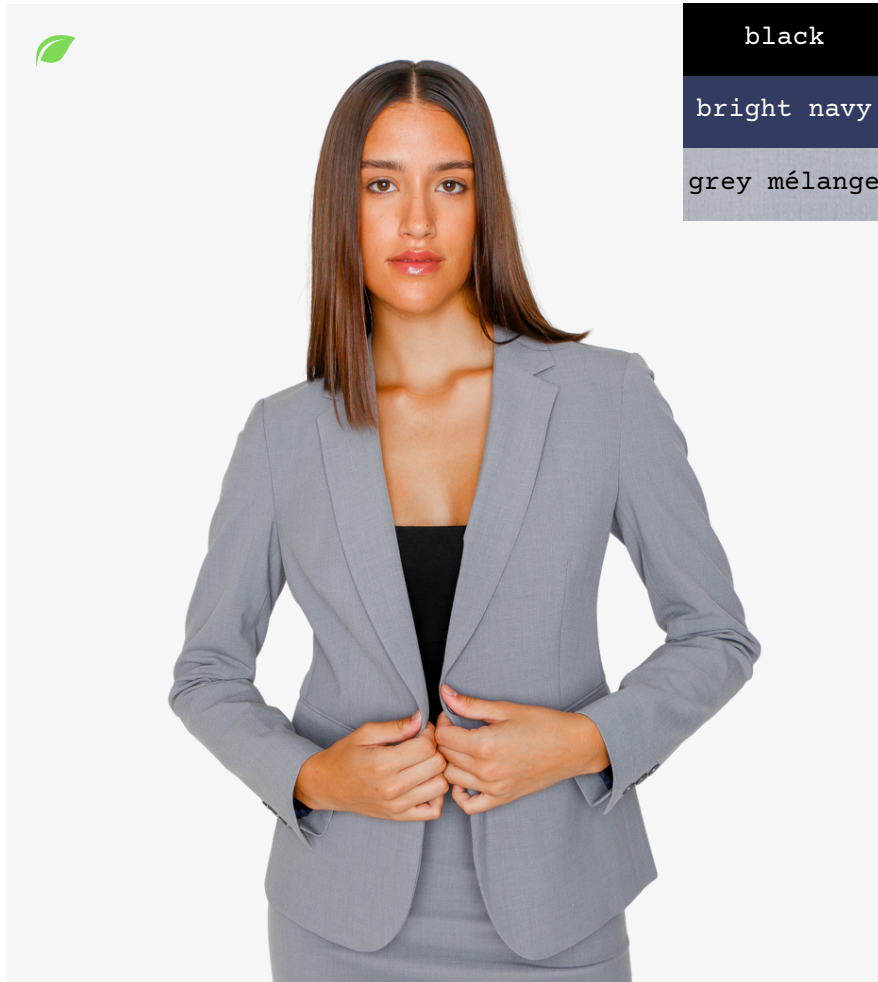
RSLVE

TAILORED

rslve.com | info@rslve.com | 888.55.rslve

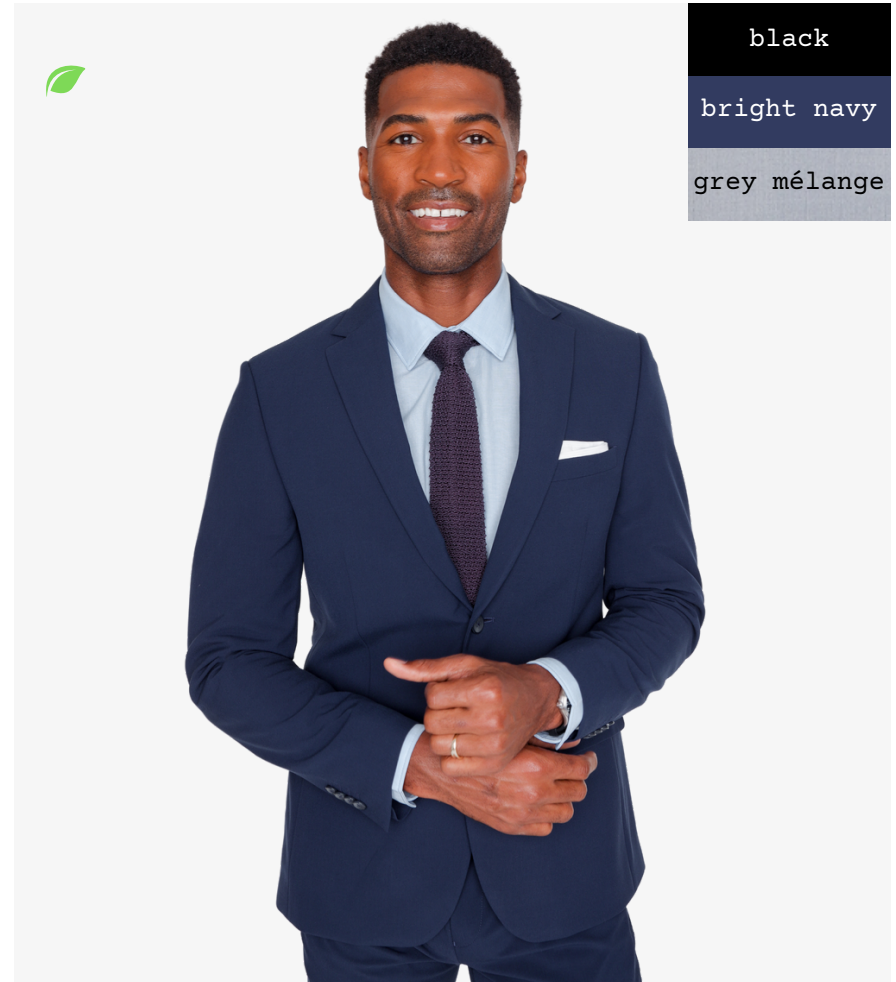
9025 LADIES' (RE)SOLVE TAILORED 1-BUTTON BLAZER

With one button and countless ways to wear it, our Ladies' 1-Button Blazer is a foundational wardrobe essential. Notch lapel | 1-button single breasted | Single vent | Stretch armhole | Non functional buttons at cuff | Flap pockets | Stretch fabric and lining. 62/33/5 Recycled Poly/Viscose/Spandex | Year-round weight | Antibacterial Finish | Machine Washable | Sizes: 00-30W



9026 (RE)SOLVE TAILORED 2-BUTTON STRETCH BLAZER

Blazer, Sport Coat or Suit Coat... However you define (or wear) it, our 2-Button Blazer combines timeless style with modern performance. Notch lapel | 2-button single breasted | Double vents | Stretch armhole | Non functional "kissing" buttons at cuff | Flap pockets | Stretch fabric and lining. 62/33/5 Recycled Poly/Viscose/Spandex | Year-round weight | Antibacterial Finish | Machine Washable | Sizes: 36S-48L



9027 LADIES' (RE)SOLVE TAILORED MID-RISE DRESS PANTS

Athleisure inspired performance + stretch. Mid-rise | Slim leg with tapered leg opening | Wide, yoga-inspired stretch waistband | Beltloops | Double hook & zip closure | Side slip pockets | Back welt pocket | 62/33/5 Recycled Poly/Viscose/Spandex | Year-round weight | Antibacterial Finish | Machine Washable | Sizes: 00-30W



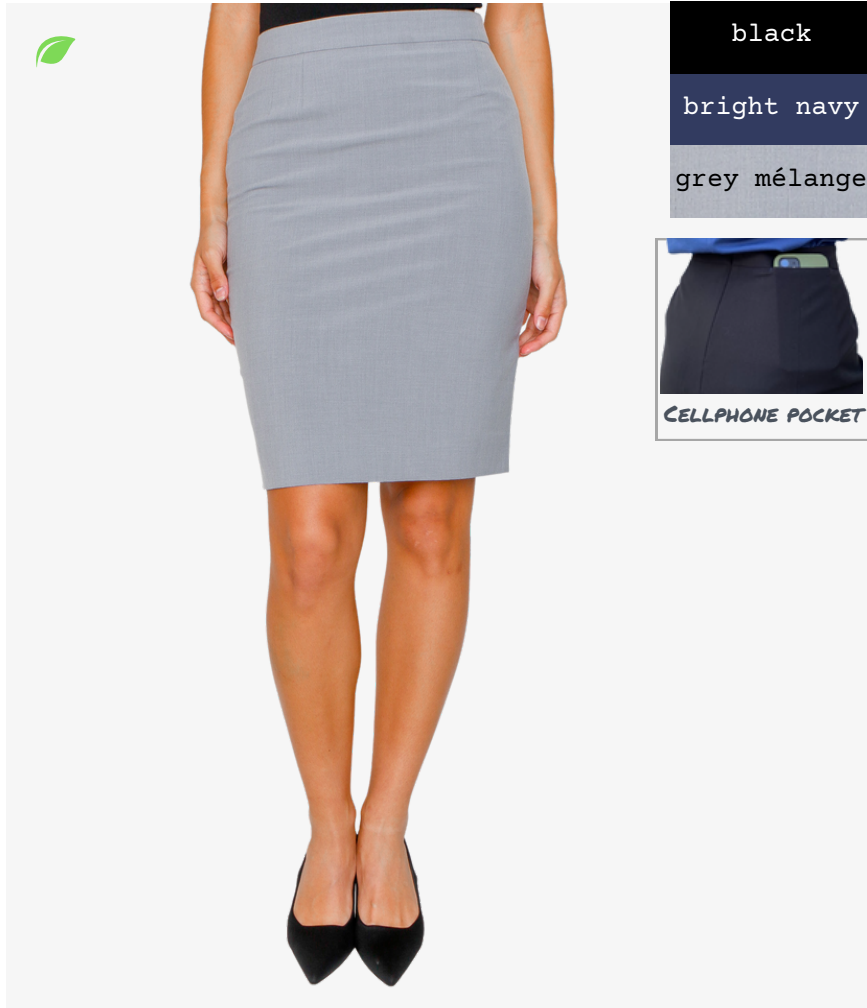
9027PA LADIES' (RE)SOLVE TAILORED MID-RISE ANKLE PANTS

Athleisure inspired performance + stretch. Mid-rise | Slim leg with tapered leg opening | Wide, yoga-inspired stretch waistband | Beltloops | Double hook & zip closure | Side slip pockets | Back welt pocket | 62/33/5 Recycled Poly/Viscose/Spandex | Year-round weight | Antibacterial Finish | Machine Washable | Sizes: 00-30W



9031 LADIES' (RE)SOLVE TAILORED PENCIL SKIRT

Our High-rise, pencil skirt is packed with functional features for comfortable all day wear. | Knee length | Stretch waistband | Discreet cellphone pocket at back hip | Back zipper | Double back slits (for coverage and ease of movement) | 2/33/5 | Recycled Poly/Viscose/Spandex | Year-round weight | Antibacterial Finish | Machine Washable | Sizes: 0-30W



9030 (RE)SOLVE TAILORED STANDARD DRESS PANT

Stretch waistband | Front closure has extend tab with button | Slash front pockets | Welt back pockets with buttons | Half lined | Tapered leg opening. 62/33/5 Recycled Poly/Viscose/Spandex | Year-round weight | Antibacterial Finish | Machine Washable | Sizes: 32-56





RSLVE

PERFORMANCE CASUALS
(tech + ponte)

rslve.com | info@rslve.com | 888.55.rslve

9011 LADIES' (RE)SOLVE KNIT PONTE OPEN BLAZER

Slim-fitting | Open-front silhouette | Darted front | Full-length sleeves | Hip length | 30/42/5 Recycled Poly/Poly/Viscose/Elastane | Antibacterial Finish | Machine Washable | Sizes: XSS-5XL



9009 LADIES' (RE)SOLVE KNIT PONTE HYBRID PANTS

Skinny fit | Side zip | Stretch waistband | Adjustable hem (can be work cropped or full length) | 30/42/5 Recycled Poly/Poly/Viscose/Elastane | Antibacterial Finish | Machine Washable | Sizes: 0-30W





RSLVE

WOVENS

[shirts & blouses]

rslve.com | info@rslve.com | 888.55.rslve

9019 LADIES' (RE)SOLVE STRETCH COWL-NECK BLOUSE

Our Cowl Neck delivers comfort and professional style with a forgiving silhouette. 4.5-ounce, 94 % recycled polyester, 6% elastane | performance stretch | machine washable | middle and bust friendly | COLORS: Almost White, Deep Black, Olive, Pearl Pink, Shadow Grey, Soft Blue | Sizes XXS-5XL



2187 LADIES' BROOKS BROTHERS® OPEN-NECK SATIN BLOUSE

The soft satin fabric of this versatile blouse has a subtle sheen, lending an elegant look to any outfit | 4.1-ounce, 100% polyester satin | Anti-static finish | Open v-neck popover | Wide box pleat at back yoke | Gathers at shoulders and cuffs | Three self-fabric-covered buttons at cuffs | Side vents | COLORS: Deep Black, Heritage Blue, Night Navy, Shadow Grey | Sizes: XS-4XL



2047 LADIES' STRETCH CREPE LONG SLEEVE CAMP BLOUSE

Taking a more refined approach to tailoring, this chic blouse offers movement and ease in a fine crepe fabric and soft fit | 4.3-ounce, 95/5 poly/spandex | COLORS: Anchor Grey, Deep Black, Ivory Chiffon, Townsend Green | Sizes: XS-4XL





RSLVE

KNITS

[polos & sweaters]

rslve.com | info@rslve.com | 888.55.rslve

2082 STRETCH PIQUE FULL-BUTTON POLO The silhouette complements office wear, while the moisture-wicking fabric make it perfect for post-work play. A back yoke seam notched vent hem, and satin-finished buttons extend the contemporary profile. Self-fabric, button-down collar | Rimmed, black satin-finished buttons (White buttons on white) | Self-turned cuffs and hem | Notched vents | Sourced from a member of the Sustainable Apparel Coalition. | **COLORS:** Anchor Grey, Anchor Grey Heather, Deep Black, Parisian Blue Heather, Sage Heather, Townsend Green, White | **Sizes:** XS-4XL



2132 DOUBLE-KNIT SNAP FRONT JACKET This modern layer blends the laidback comfort of a sweatshirt and the sophistication of a tailored jacket. Matte-finished snaps on self-fabric cuffs allow for easy on and off wear. The open collar allows tees and shirts to stylishly peek through. 8.3-ounce, 100% double-knit polyester. Matte-finished snaps | Double-patch, flap front pockets | Sourced from a member of the Sustainable Apparel Coalition. | COLORS: Deep Black, Night Navy, Townsend Green | Sizes: XS-4XL

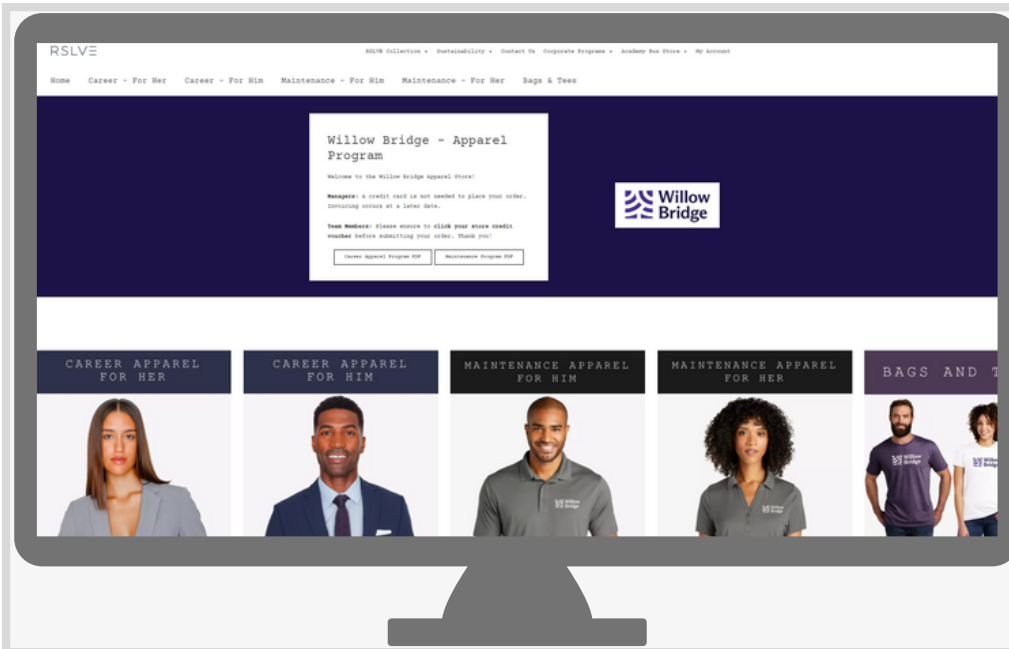


2195 LADIES' BROOKS BROTHERS® COTTON STRETCH V-NECK SWEATER A super-soft evolution of the classic sweater silhouette, designed for year-round layering and unsurpassed comfort. 70/30 pima cotton/nylon | Fully-fashioned throughout | 1x1 rib neck, cuffs and hem | Back shoulder seam | COLORS: Deep Black, Light Shadow Grey Heather, Navy Blazer, Pearl Pink | Sizes: XS-4XL



2374 BROOKS BROTHERS® COTTON STRETCH V-NECK SWEATER A super-soft evolution of the classic sweater silhouette, designed for year-round layering. 70/30 pima cotton/nylon | Fully fashioned raglan sleeves | 1x1 rib neck, cuffs and hem | COLORS: Deep Black, Light Shadow Grey Heather, Navy Blazer | Sizes: XS-4XL





CORPORATE PROGRAMS

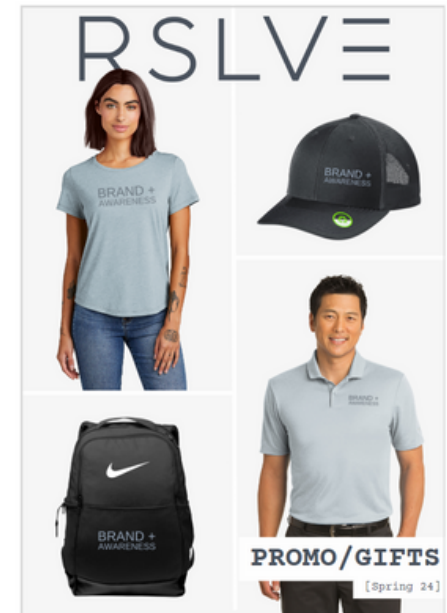
Has managing your apparel program become a full-time job? RSLVE is here to help! Trust our friendly and experienced team to deliver results.

- Design Consultation
- Logo Applications
- Customization
- Program Management
- Private Company Stores
- Corporate Pricing
- Transparent Accounting



WORKWEAR + PROMOTIONAL APPAREL

We also offer Workwear and Promotional Apparel programs. Click the catalog images to launch our latest Workwear and Promo catalogs.



RSLVE

RSLVE (*re·solve*) designs and executes inspiring apparel programs for organizations of all sizes. From t-shirts to tailored suiting, we collaborate with you to design stylish impressions that embody the spirit of your brand. And we do it all with an authentic commitment to **style, people, and planet.**